

LCV

EDITION 2023

E-XTENSION DAYS

Antoine GRAPIN

LCV range Press Officer

welcome



Renault vans #1 in Europe

YTD 2023



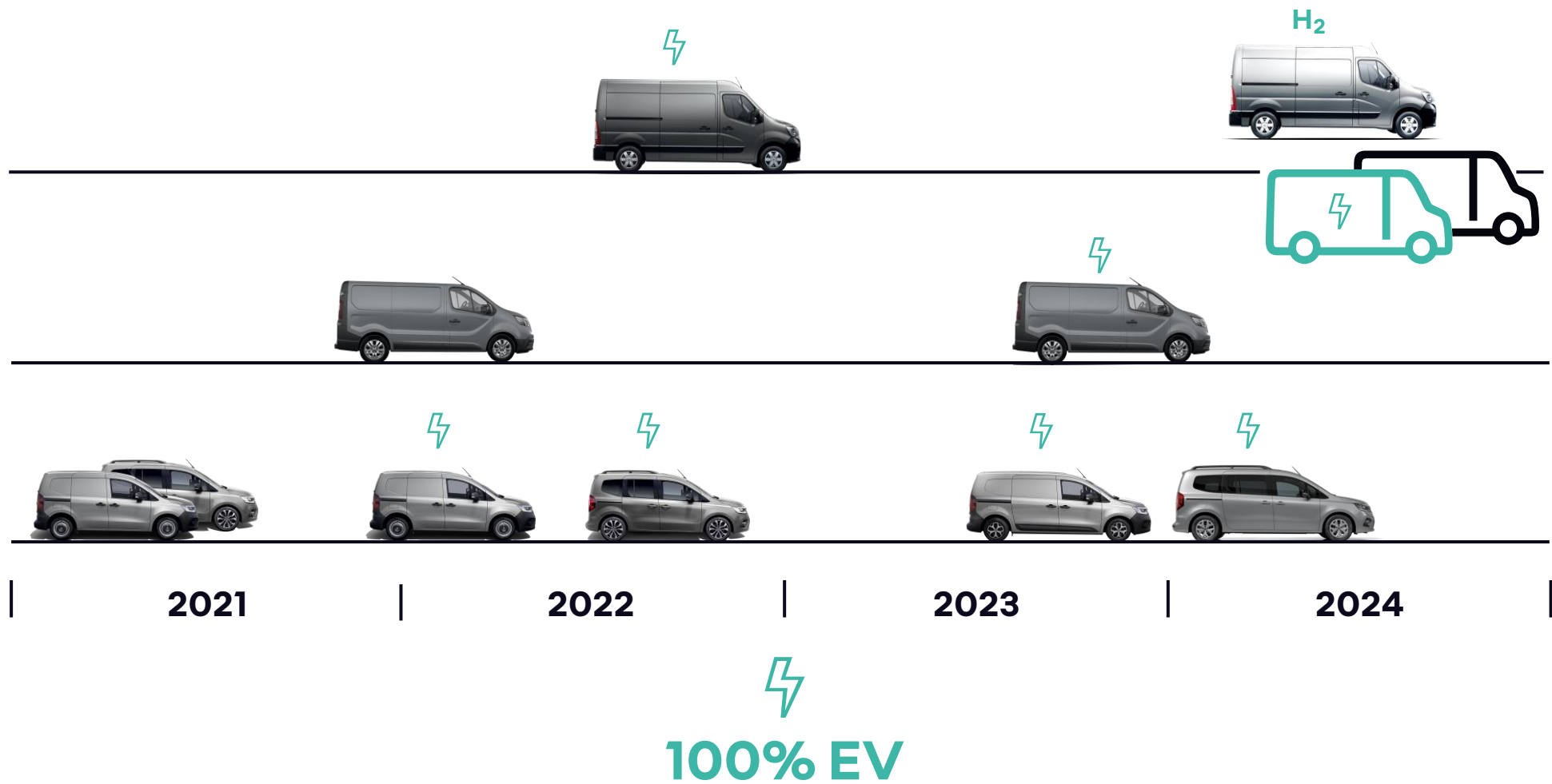
#1 small vans

#1 heavy vans

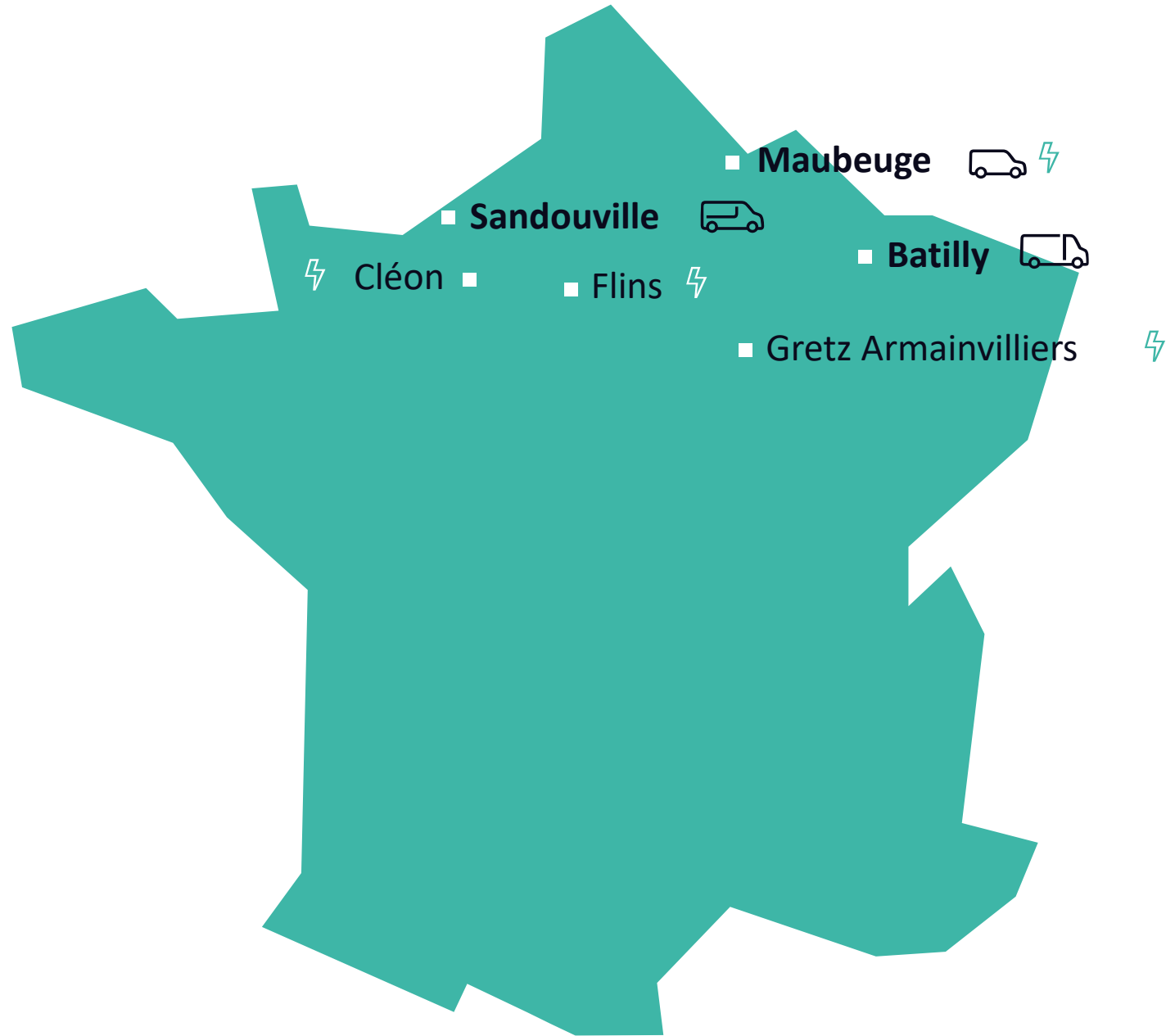
#3 medium vans

LCV line-up

100% electric renewal



production
network
with EV skills



LCV EV

market | Europe

2010

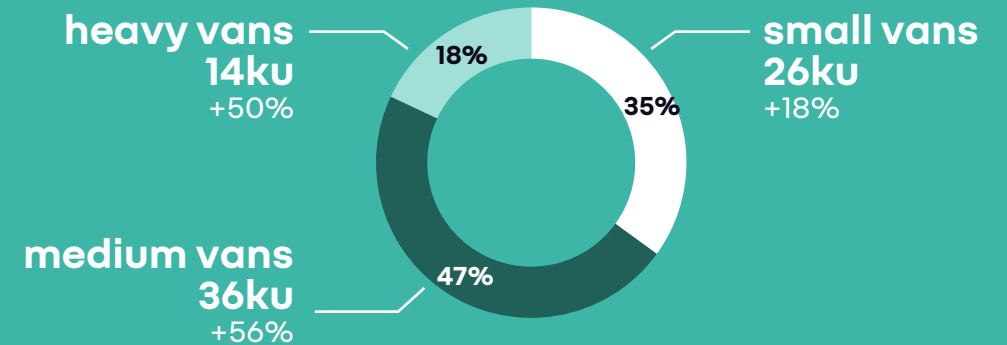
low volumes
few brands



Source: Dec 22 LCV BU TOP 15 EV segment share (restricted to VAN)



2022



TIV 2022 volume
76,164 units

+39% vs 2021



STREETSCOOTER

...

Florent PICHEREAU

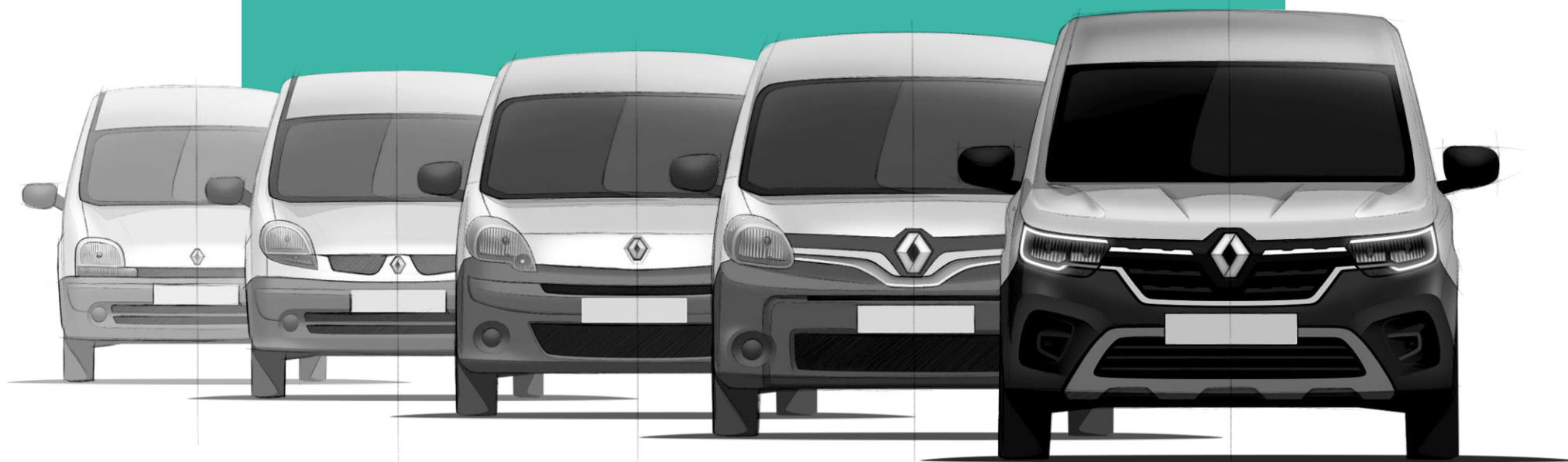
Renault Kangoo Product Manager

New Renault
Kangoo Van L2
E-Tech electric



success story

100,000 electric units sold since 2011

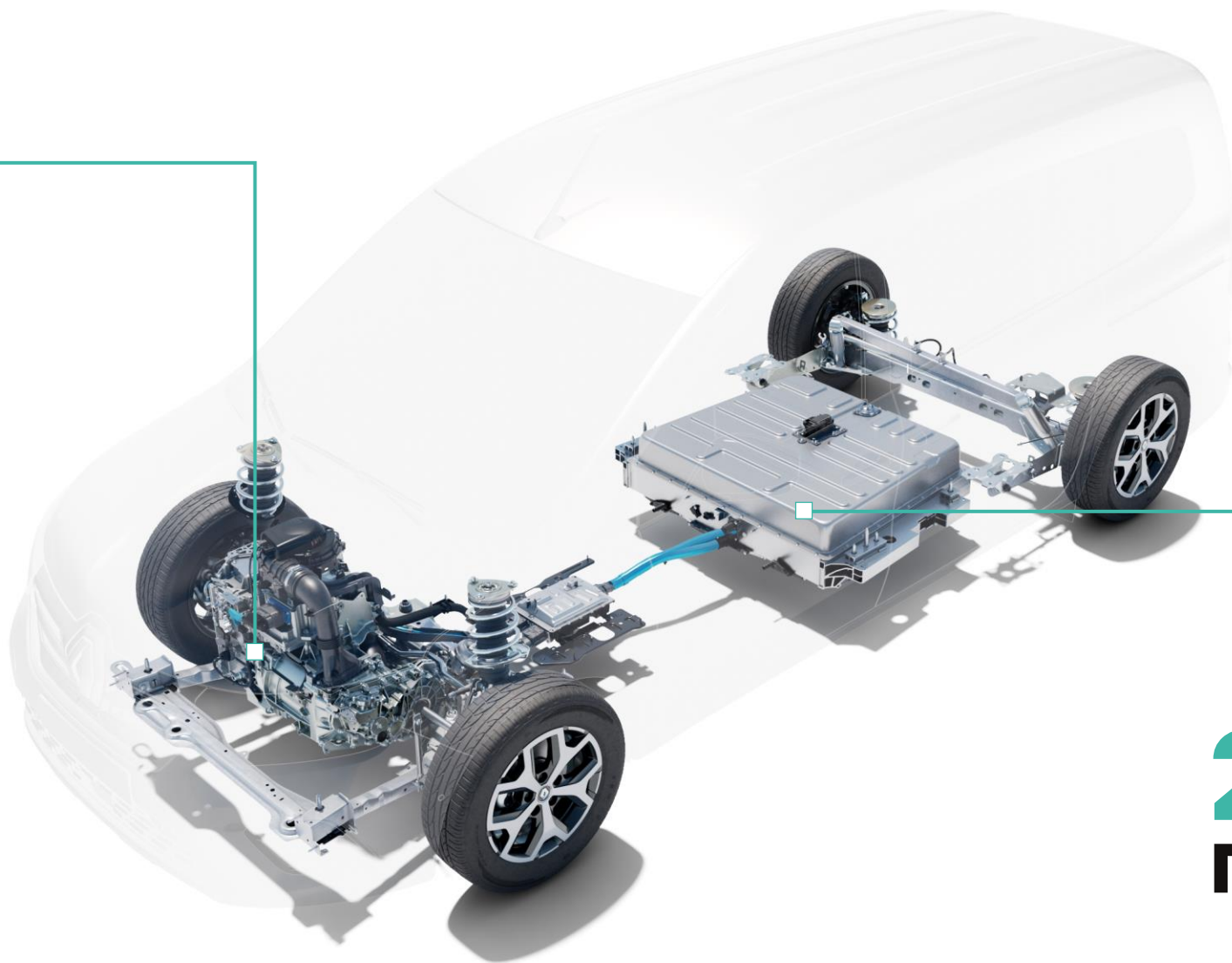


4.4 million since 1997

motor

90 kW

245 N.m



battery

45 kWh

278 km
range WLTP



home charging

15 to 100%

11 kW wallbox

3h50

7 kW wallbox

6h



public station charging

15 to 80%

11 kW AC charger

2h40

37 km in 30 min

22 kW AC charger

1h30

65 km in 30 min

80 kW DC charger

37 min

170 km <30 min

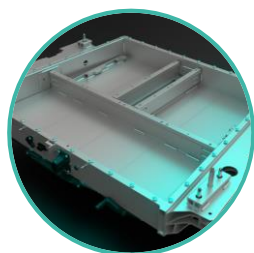


3 regenerative
braking modes

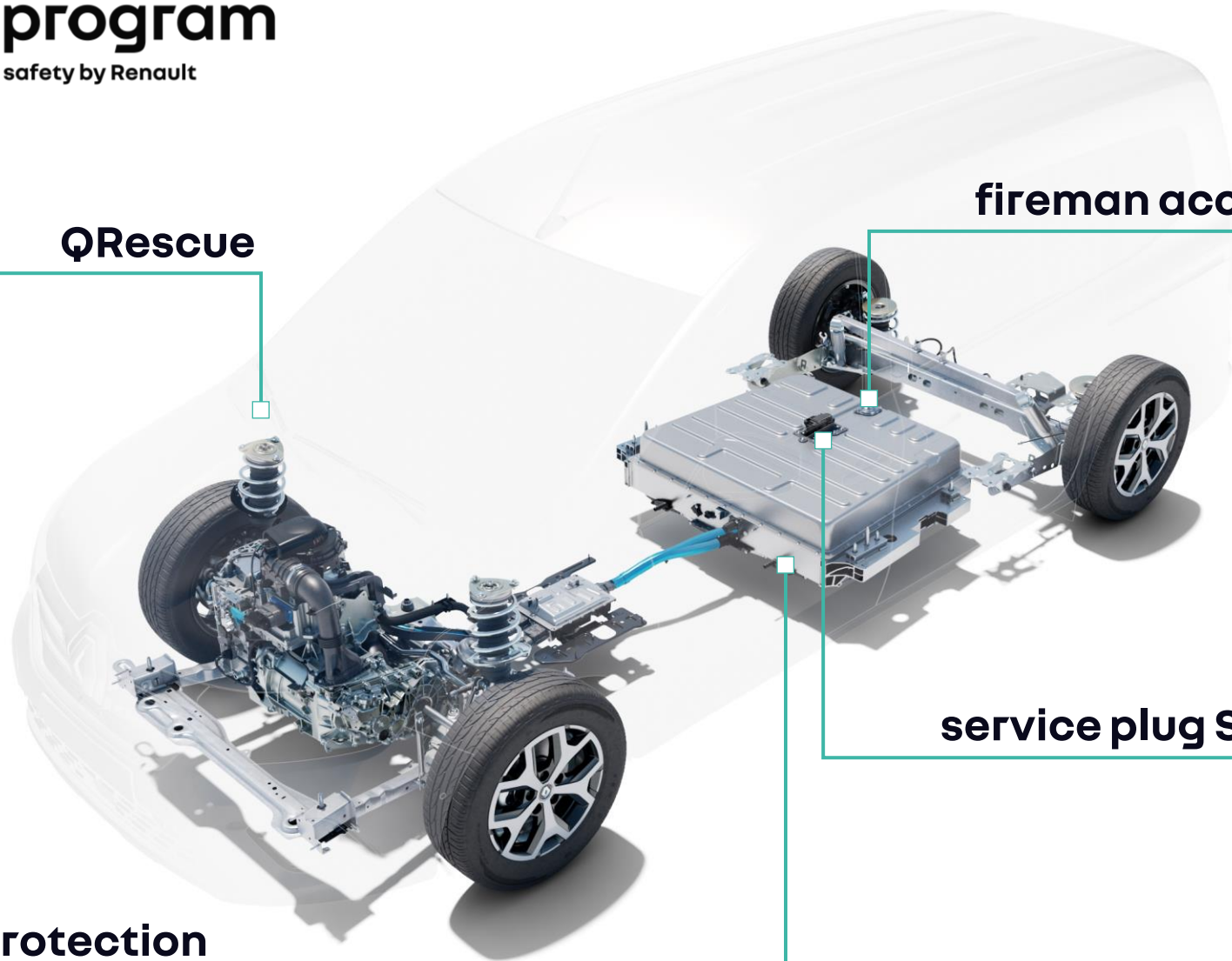
2 driving
modes



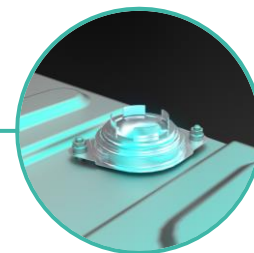
QRescue



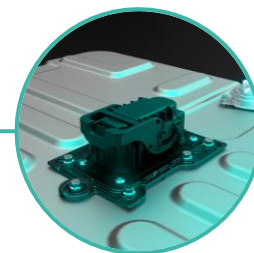
battery protection



fireman access



service plug SD switch



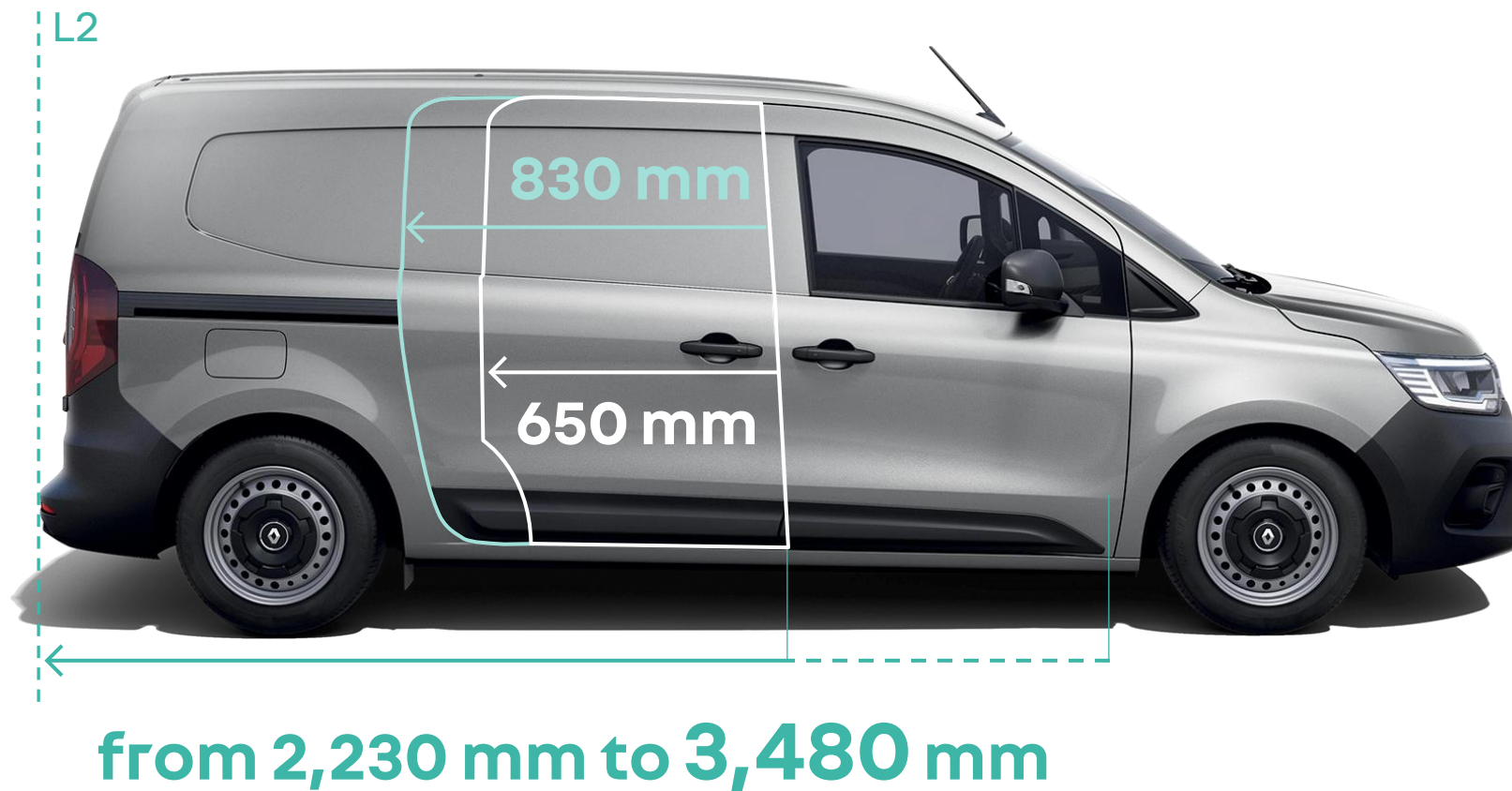
loading solutions

1.5t towing capacity

L1 = 600 kg / L2 = 800 kg



loading capacity
up to 4.9 m³



heat pump



Caroline DION

Renault Trafic Product Manager



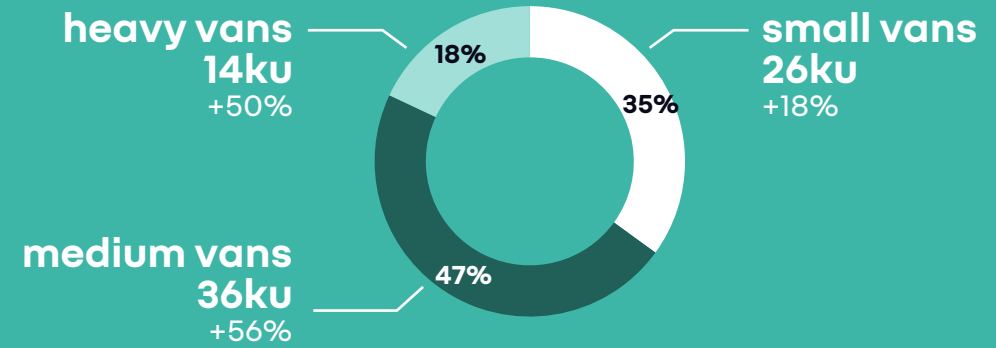
New Renault
Trafic Van
E-Tech electric

medium van EV

market | Europe

European EV medium van market
2022 volume: **36,032 units**

+56% vs 2021



top 5 markets

78% of total European EV medium van market

01

23.4%

+28% vs 2021



02

17.6%

+172% vs 2021



03

16.5%

+110% vs 2021



04

12%

+20% vs 2021



05

8.7%

+36% vs 2021



success story



2.4 million since 1980



Traffic Van... now electric

after a renewal in 2022, Traffic completes
in 2023 the Renault LCV 100% electric offer

2022

new Traffic more than a van

more safety features



more practical



more qualitative



2023

new Traffic now 100% electric

all Traffic strengths



Renault 100% electric
know how



**Traffic still stands at professionals side and supports them
in their environmental transition**

motor

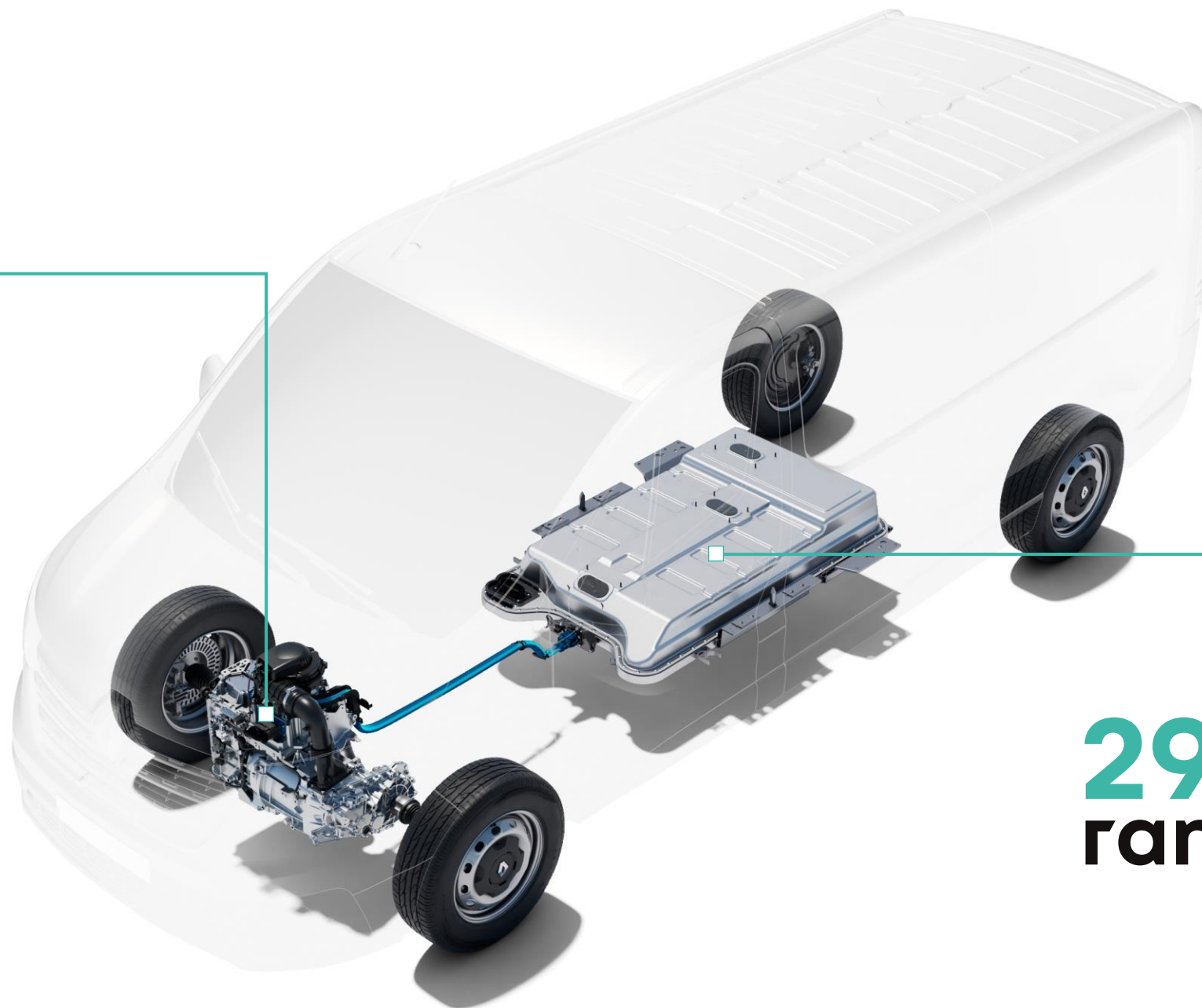
90 kW

245 N.m

battery

52 kWh

297 km
range WLTP





home charging

15 to 80%

7 kW wallbox
5h30

3.7 kW domestic socket
12h



public station charging

15 to 80%

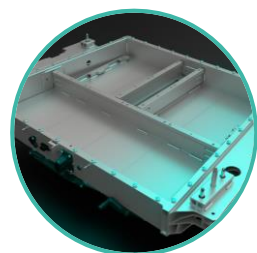
7 kW AC charger
5h30
50 km in 75 min

22 kW AC charger
1h25
50 km <25 min

50 kW DC charger
1h

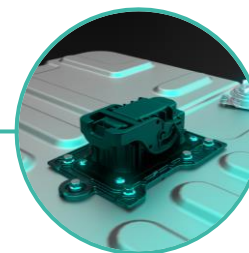


Qrescue*

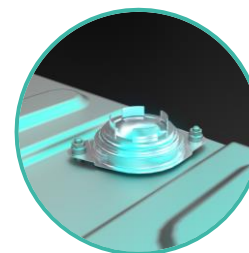


battery protection

service plug SD switch



fireman access



* in 2024

Traffic Van offer | body

L1 — H1 —



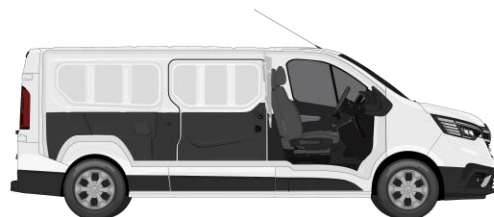
5.8 m³



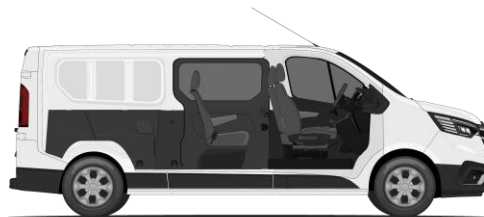
3.3 m³

L2

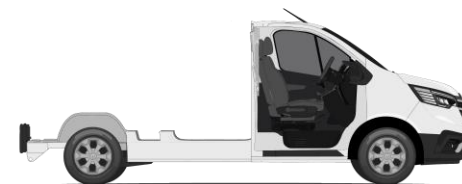
H1 —



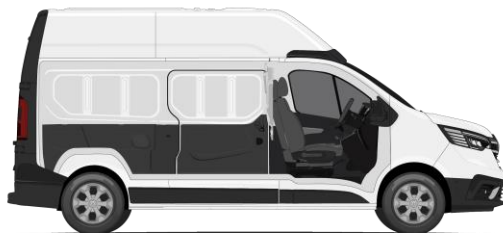
6.7 m³



4.3 m³

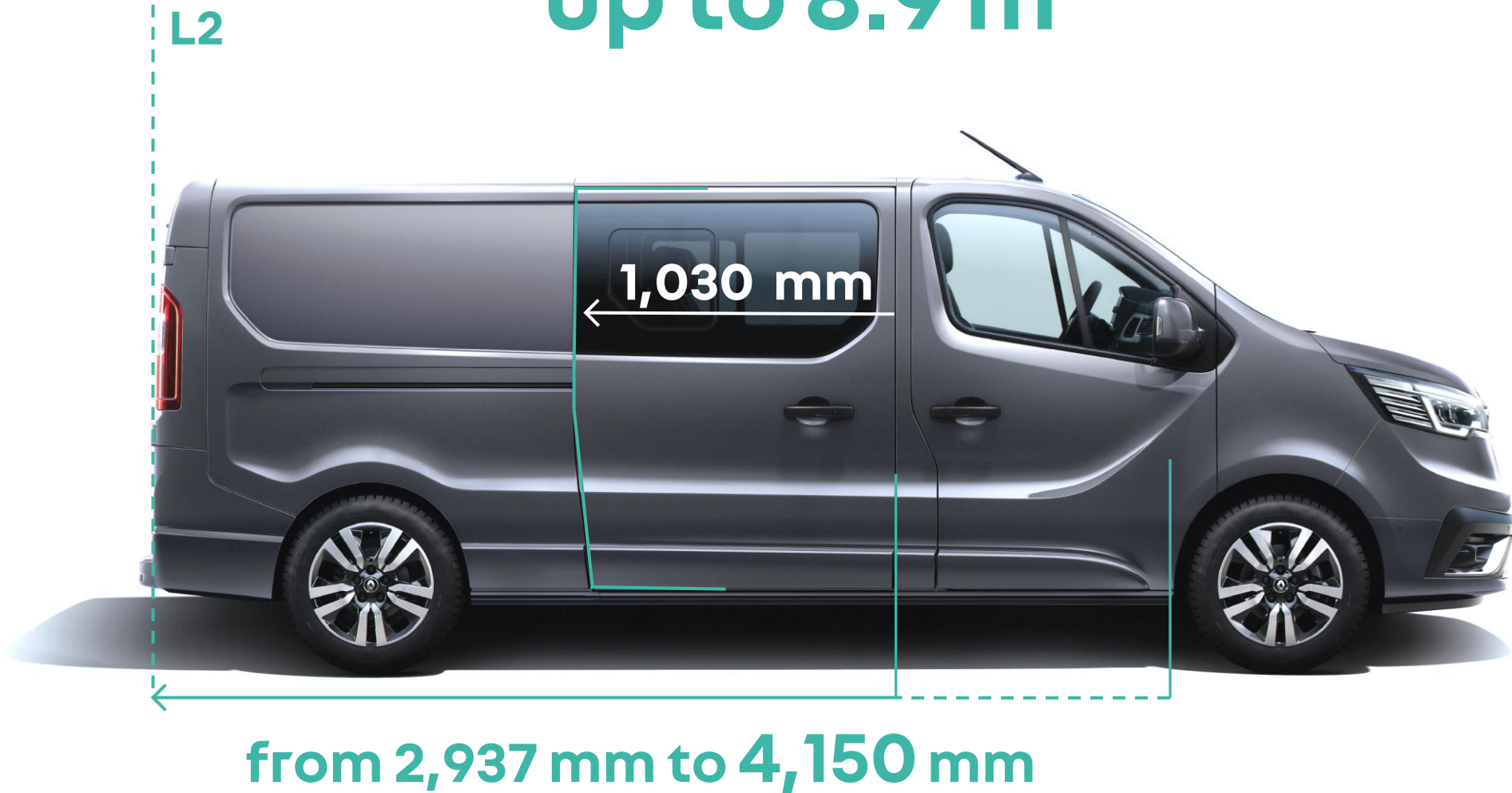


H2 —



8.9 m³

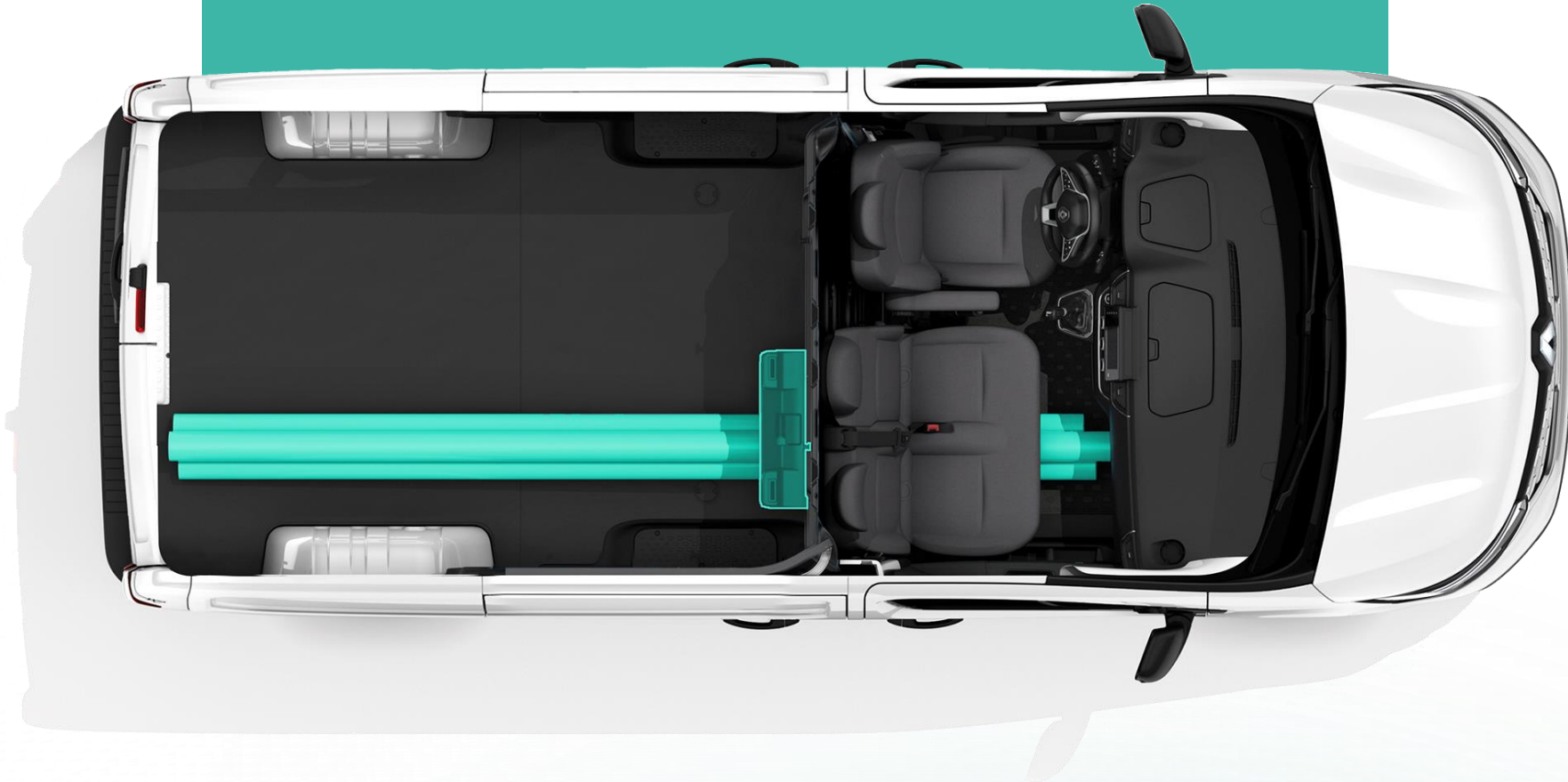
loading length at the best level
up to 8.9 m³



loading solutions

920 kg towing capacity

1,100 kg payload capacity





**cabin
pre-heating /
pre-cooling**

**remote charge
control
& scheduling**

new Renault Trafic Van E-Tech

100% electric



versions & dates

L2 H1 & H2 – Van, FloorCab, CrewCab

- open orders: october 23
- SOS: november 23

L1 H1 – Van, CrewCab

- open orders: november 23
- SOS: december 23



powertrain

power

- 90 kW / 245 Nm

range

- up to 297 km WLTP
- Vmax: 110 km/h
- extended range
(limit @90 km/h): up to 316 km

battery

- 52 kWh

charge

- AC 7 kW & **AC 22 kW**
- option: DC 50 kW (based on AC 7 kW monophasis)



features

weights

- payload: 1,100 kg
- towing: 920 kg

dimensions

- **no change vs ICE**

equipments

- manual A/C as a standard
- ADAS focused on city usage

Antoine GRAPIN

LCV range Press Officer

Pro+ centers

Pro+ converters

Renault Pro+

charging solutions

fleet monitoring

M~~O~~**BILIZE**
BEYOND AUTOMOTIVE

M~~O~~**BILIZE**
BEYOND AUTOMOTIVE

600

Pro+ centers

25

countries

>50%

of LCV sales

10+ years

of expertise

Renault Pro+



Jean-Michel GICQUEL

LCV Conversion Manager

conversions 2022 Renault

our customized solutions to meet needs of professionals
30% of LCV converted

**building
& maintenance**



60%

**people
mover**



21%

**goods
transportation**



14%

**medical
& security**



5%

context

customized solutions
for urban regulation

ambition

30% of E-Tech
converted vehicles

assets

full E-Tech line up

A light gray world map serves as the background. Two regions are highlighted in a darker gray: Europe and South America. Both regions are covered with numerous small white dots, representing the locations of certified converters. The dots are densely packed in Western Europe and across Brazil, with more sparse distribution in other parts of the highlighted areas.

359

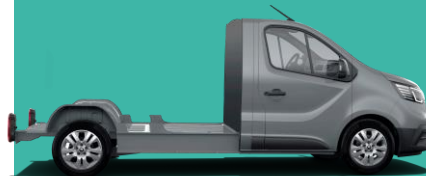
certified converters
worldwide

Kangoo



3.3 m³ → 4.9 m³

Trafic



5.8 m³ → 8.9 m³

Master



8 m³ → 22 m³

electric line up

display

Kangoo Van L2 E-Tech



Workshop - SD services



Refrigerated - Lecapitaine



crew cab

Trafic Van E-Tech



refrigerated - ECP



Workshop - Optima



crew cab

Master E-Tech



ambulance - Gruau



tipper - Gruau

display

Kangoo Van L2 E-Tech



Workshop - SD services



Refrigerated - Lecapitaine



crew cab

Trafic Van E-Tech



refrigerated - ECP



Workshop - Optima



crew cab

Master E-Tech



ambulance - Gruau



tipper - Gruau



mobile store - Etalmobil

Q&A



programme



12:15 am
lunch



1:30 pm
test drive

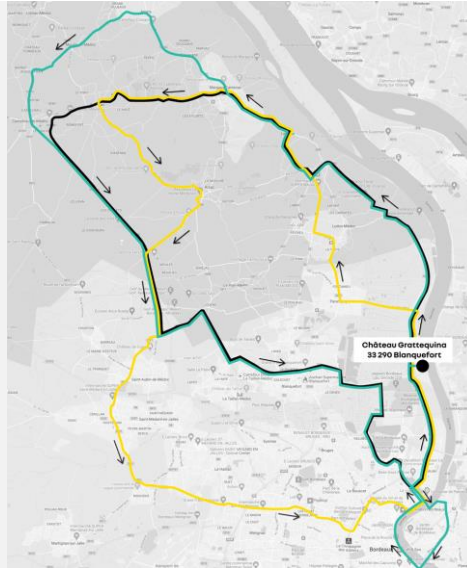


3:00 pm
transfer to airport
or train station

test drives

Trafic Van E-Tech

- 1h55 – 76 km
- 2h10 – 88 km
- 2h10 – 88 km

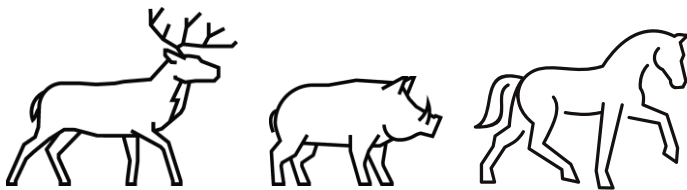


Kangoo Van L2 E-Tech

- 20 min – 17 km
- 30 min – 27 km



safety



50



70



80



130





LCV

EDITION 2023

E-XTENSION DAYS